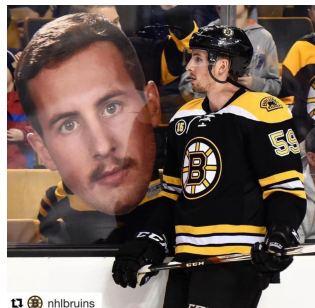




Meet Boston Bruin Tim Schaller at Primary Bank



nhlbruins

We are excited to welcome Merrimack, N.H. native and Boston Bruins forward Tim Schaller to visit Primary Bank, **Monday, March 5, from 4-6 PM!**

Fan favorite Schaller will be available to pose for photos, sign autographs, and visit with hockey fans of all ages! There is no cost to attend this event.

T-shirts and raffle tickets will also be sold at the event, with all proceeds to benefit the Jimmy Fund. For more information, [visit our website](#) or see the [event on our Facebook page](#).

WE BELIEVE IN INTEREST.
Earn more of it with the
1.11% APY* Choice Money Market.

PrimaryBank FDIC
603-310-7200 | PrimaryBankNH.com

Featured Product

Choice Money Market Account

If you're looking for a way to have your money do more of the work, our 1.11% APY* Choice Money Market Account will help.

You can **open your account online** and the account comes with many convenient features, including free Online Banking and eStatements, free Standard Checks, and no-fee withdrawals at SUM Surcharge Free ATMs.

Open your account today!

*APY = Annual Percentage Yield. The APY is accurate as of 2/1/2018. Rates are subject to change at the Bank's discretion after the account is opened. Minimum to open is \$10,000. Applicable fees may reduce earnings. Tier 1: \$0.01 to \$500,000.99 - 1.11% APY Tier 2: \$500,001 and above - 0.55% APY

SIGN UP FOR EMAILS

SHARE THIS EMAIL

Primary Bank

dlagerquist@primarybanknh.com

<http://www.primarybanknh.com>

